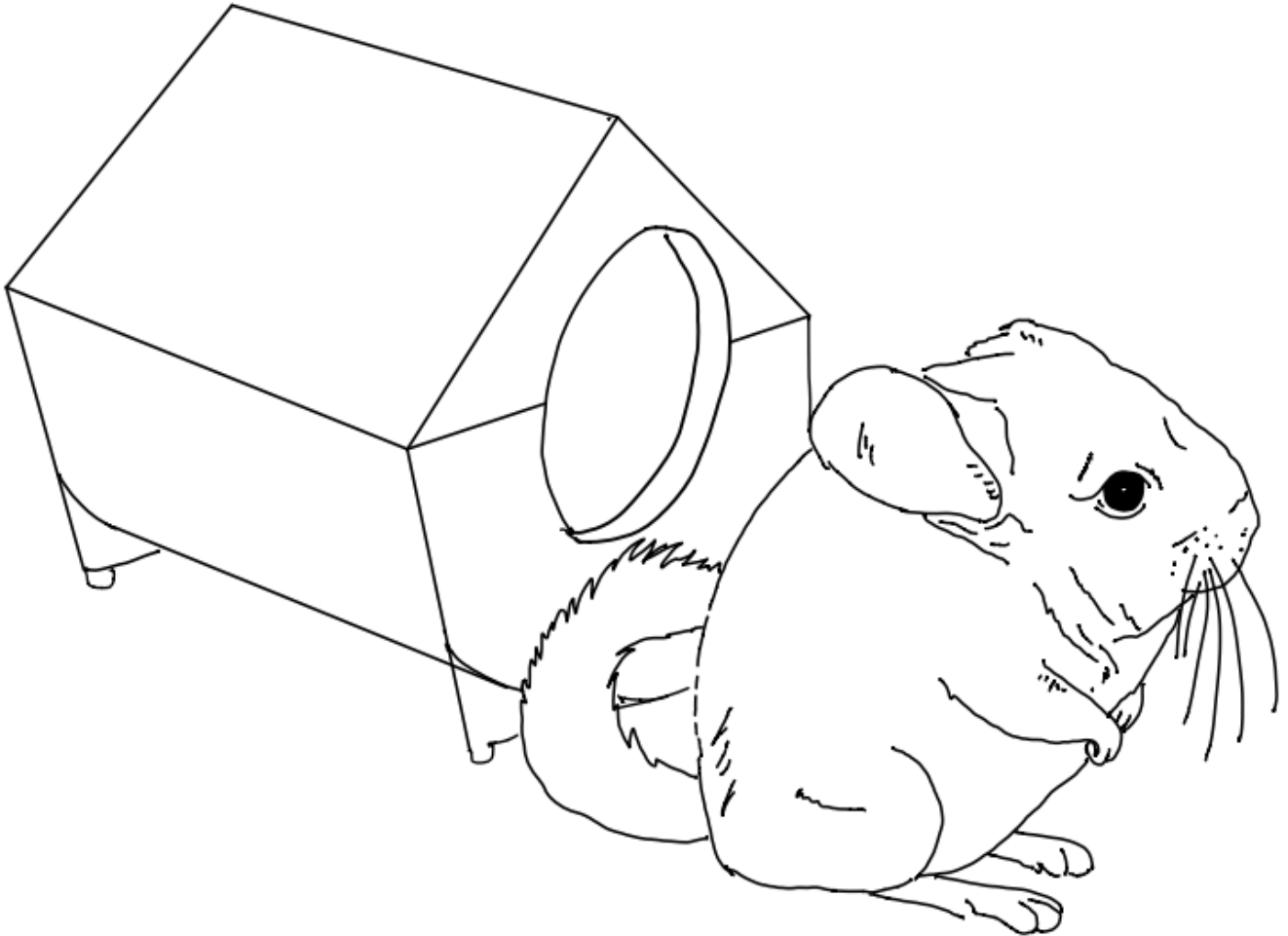


Chinchilla



Chinchillas help us understand the physiology, development and function of the auditory system. The inner ear, middle ear and Eustachian tubes of these animals are similar to that of humans. Therefore, studying them allows for advances in auditory and acoustic research. Their differences with humans are also important. They are not susceptible to innate middle ear infections as humans are, so chinchillas have been a useful model in studying these health issues.



BRAD

Biomedical Research Awareness Day | www.BRADglobal.org